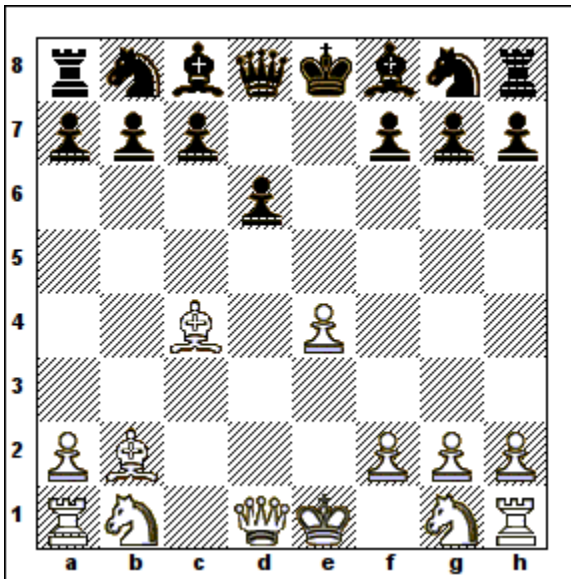


Analiza la siguiente partida una vez con blancas y luego con negras.

Recuerda descubrir la intención de cada jugada e imaginar las variantes antes de hacerla en el tablero.

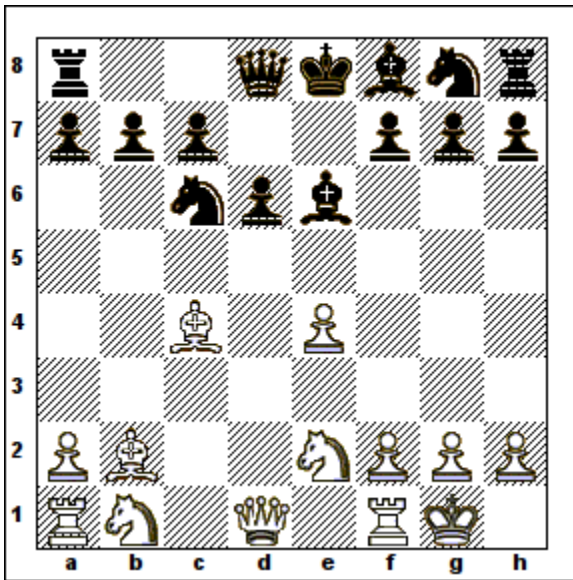
1. Pe4 Pe5 2. Pd4 Ped4 3. Pc3 Pdc3 4. Ac4 Pcb2 5. Ab2 Pd6



6. Ce2

[6. Db3 De7 (6... Dd7 7. Cc3 Cc6 8. Cd5 Ca5 9. Dg3 Pf6 (9... Cc4 10. Ag7 Ag7 11. Dg7) 10. Ab5 Pc6 (10... Db5 11. Cc7) 11. Ac3 (11. Aa4) 11... Ce7 (11... Pcb5 12. Aa5) 12. Aa5 Cd5 (12... Pcb5 13. Cc7) 13. Ped5 Pcb5 14. Ce2 Df7 15. Dd3 Pb6 16. Ab4 Pa5 17. Aa3 Pb4 18. Dc4 (18. Ab2) 18... Ab7 (18... Pba3 19. Dc6) 19. Cf4 Tc8 20. Dd4 Pba3) 7. Cc3 (7. Cd2) 7... Cf6 8. Cge2 (8. Pf3) 8... Cc6 (8... Ce4 9. Ce4 De4 10. Af7) 9. Pf4 Ad7 10. Cb5 Dd8 (10... Ce4 11. Cc7) 11. Af7 Re7 12. Pe5 Pde5 (12... Ce4) 13. Aa3]

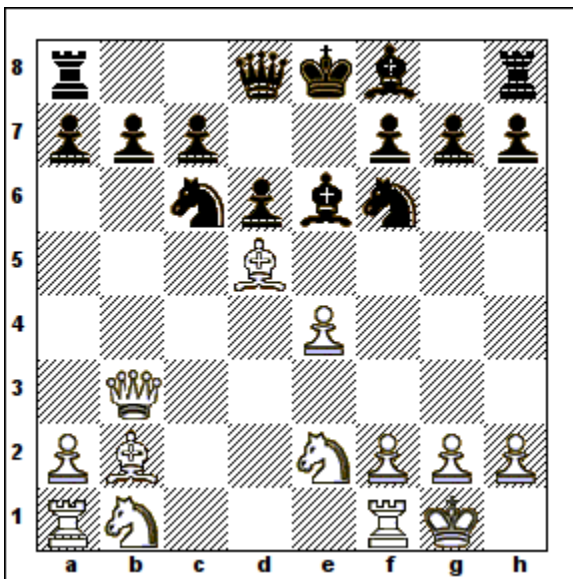
6... Cc6 7. O-O Ae6



8. *Ad5*

[8. *Ae6 Pfe6* 9. *Db3* (9... *Cf4 Dd7* (9... *Pe5* 10. *Cd5* (10. *Ce6 Dd7*) 10... *Cf6*)) 9... *Dd7* 10. *Cd2* (10. *Db7 Tb8*) 10... *O-O-O*]

8... *Cf6* 9. *Db3*



9... *Dc8*

[9... Ca5 10. Da4 Pc6;

9... Cd5 10. Ped5 Ca5 11. Da4 Pc6 12. Pde6;

9... Ce4 10. Ae6 (10. Db7 Ad5; 10. Ae4 Ab3) 10... Pfe6 11. Db7 (11. De6 De7)

11... Rd7 (11... Tb8 12. Dc6; 11... Dd7 12. Da8) 12. Cd4 Cd4 13. Ad4 (13. De4)

13... Pd5]

### 10. Cf4 Cd8

[10... Ad5 11. Ped5 Ce5 12. Te1 Ae7 (12... Cfd7 13. Cd3 Ae7 (13... Pf6 14. Pf4)

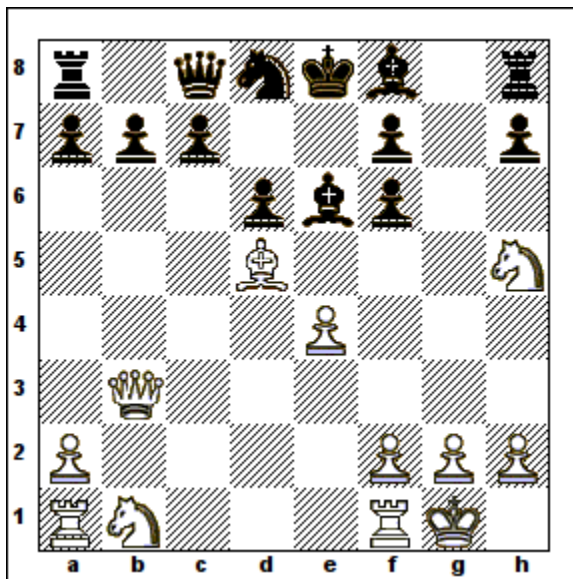
14. Ce5 Pde5 (14... Ce5 15. Pf4 Cg6 16. Ag7) 15. Ae5 Ce5 16. Te5 Dd7 (16...

O-O 17. Te7; 16... Rf8 17. Cc3 (17. Cd2 Af6 18. Tee1 Aa1) 17... Af6 18. Te3

Pg6 19. Td1 Rg7) 17. Db7 (17. De3 Pf6 18. Te6 Rf7 19. Cc3 Ab4) 17... O-O);

10... Cd5 11. Ped5 Ae7 (11... Ca5 12. Da4)]

### 11. Af6 Pgf6 12. Ch5



### 12... Pc6

[12... Ae7 13. Cg7 (13. Dg3 Pc6 14. Tc1 Ag4 (14... Dd7)) 13... Rf8]

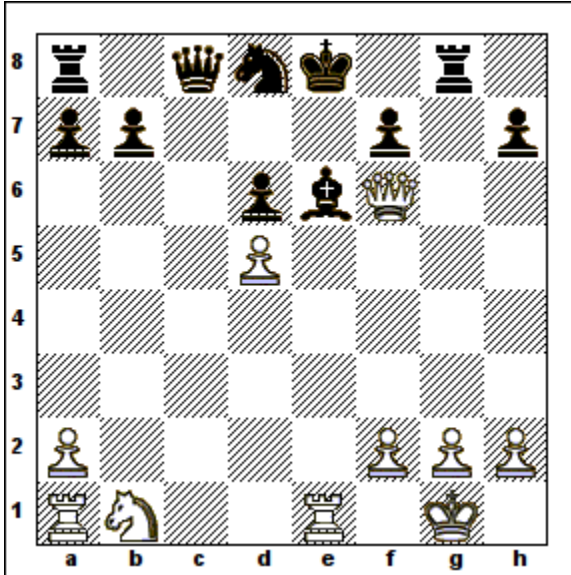
### 13. Te1

[13. Ae6 De6]

### 13... Ae7 14. Df3 Tg8

[14... Ag4 15. Cf6]

15. Cf6 Af6 16. Df6 Pcd5 17. Ped5



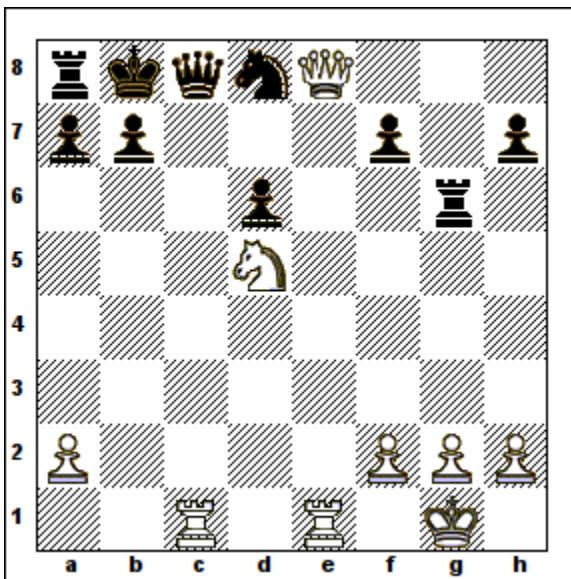
17... Tg6

[17... R<sub>d7</sub> 18. P<sub>d6</sub> P<sub>f6</sub> 19. C<sub>c3</sub> T<sub>g6</sub> 20. D<sub>f3</sub> D<sub>c6</sub>]

18. Dh8 Rd7 19. Cc3 Ad5

[19... Ah3]

20. De8 Rc7 21. Cd5 Rb8 22. Tac1



22... Cc6

[22... D<sub>g4</sub> 23. D<sub>d8</sub> D<sub>c8</sub> 24. D<sub>c8</sub>]

23. Tc6 Pbc6 24. Tb1 [1:0]

[1:0] = Blancas ganan

[0:1] = Negras ganan

[0,5:0,5] = Tablas (empate)